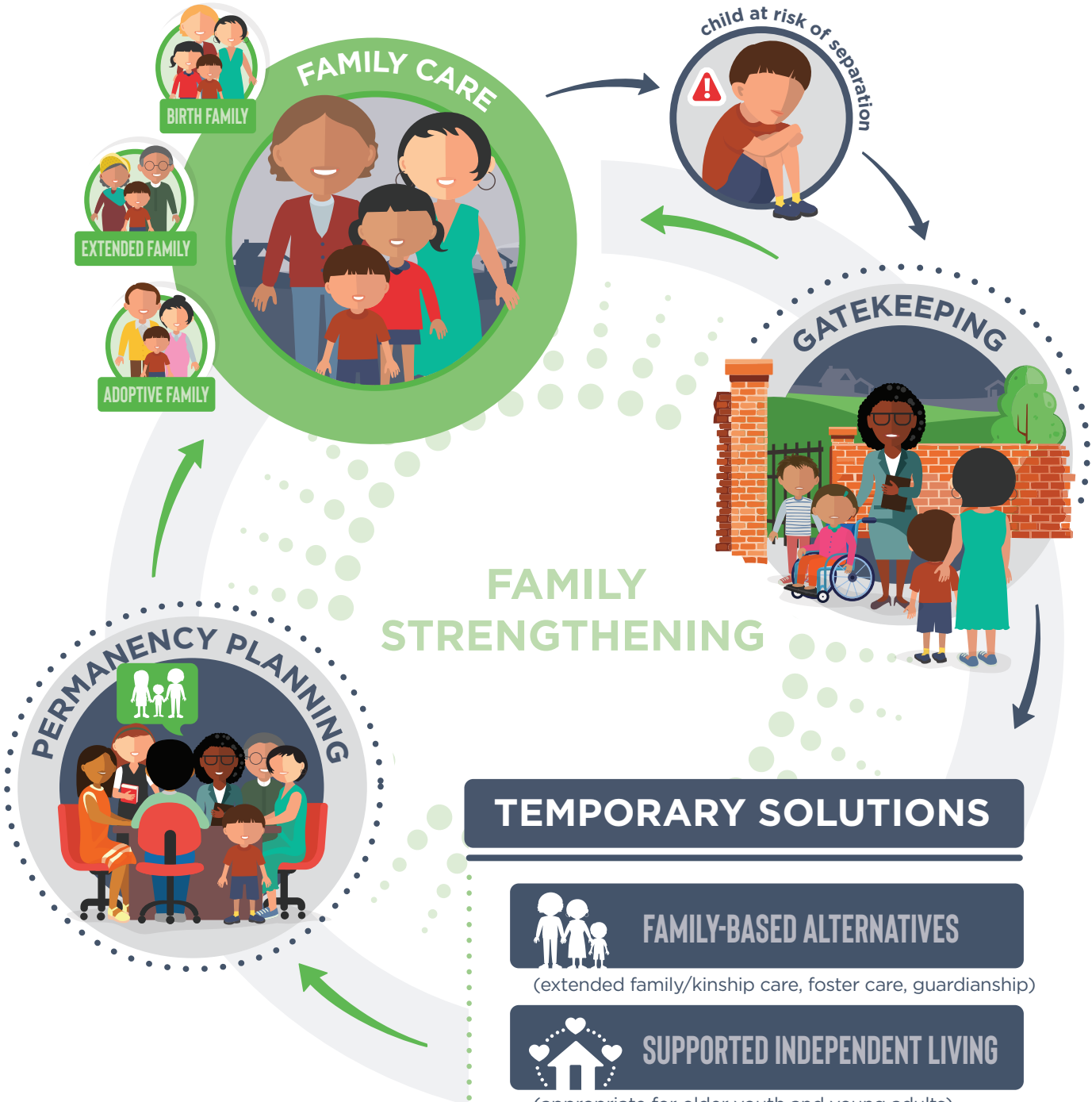


LONG-TERM SOLUTIONS



TEMPORARY SOLUTIONS



FAMILY-BASED ALTERNATIVES

(extended family/kinship care, foster care, guardianship)



SUPPORTED INDEPENDENT LIVING

(appropriate for older youth and young adults)



RESIDENTIAL CARE

(non-family based setting including respite, rehabilitative, and emergency purposes)